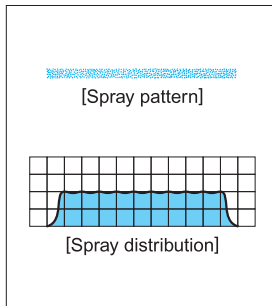
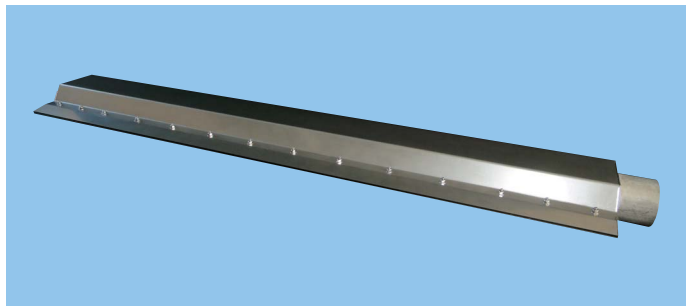


Energy-saving Slit Laminar (Air Curtain) Slit Nozzles Utilizing Blower Air

SLNB



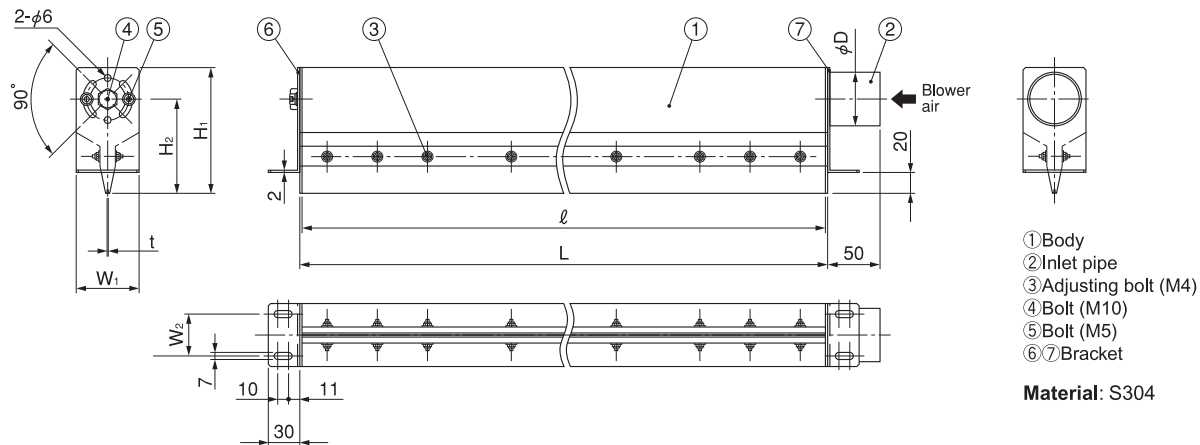
[Features]

- Pressure loss is minimal to enable high spray impact performance.
- Long thin slit with tapered nose is suitable for installation in a narrow space such as between support rolls.
- Drastic energy saving is achieved by switching from compressor-using type.

[Applications]

- Blow-off drying • Air knife

SLNB series



Air inlet type	Slit length ℓ (mm)	Slit opening t (mm)	Dimensions (mm)					Mass (kg)	
			L	H ₁	H ₂	W ₁	W ₂		ϕ D
D38	400	0.5	404	105	80	50	30	38.0	1.9
	600		604						2.7
	800		804						3.5
	1,000		1,004						4.3
D50	1,200	1,204	120	90	60	40	50.8	5.9	
D38	400	1.0	404	105	80	50	30	38.0	1.9
	600		604	120	90	60	40	50.8	3.2
	800		804	120	90	60	40	50.8	4.1
D65	1,000	1.0	1,004	140	102.5	75	50	63.5	6.2
	1,200		1,204						7.4

[Note] Appearance and dimensions may differ slightly depending on materials and nozzle codes.

Slit Length (mm)	Slit Opening (mm)	Blowing Air Volume (m ³ /min, Normal)					
		5 kPa	10 kPa	15 kPa	20 kPa	25 kPa	30 kPa
400	0.5	0.97	1.60	2.01	2.58	3.01	3.40
600		1.45	2.39	3.18	3.87	4.51	5.10
800		1.94	3.19	4.24	5.17	6.01	6.80
1,000		2.42	3.99	5.30	6.46	7.52	8.50
1,200		2.91	4.79	6.36	7.75	9.02	10.20
400	1.0	1.91	2.81	3.52	4.13	4.67	5.16
600		2.87	4.22	5.28	6.19	7.00	7.74
800		3.82	5.62	7.04	8.23	9.34	10.33
1,000		4.78	7.03	8.80	10.32	11.67	12.91
1,200		5.73	8.43	10.56	12.39	14.01	15.49

How to order

Please inquire or order for a specific nozzle using this coding system.

<Example> ...D65SLNB1200x1.0S304-S-A

D65	SLNB	1200	x	1.0	S304-S-A
<small>Air Inlet Type</small>		<small>Slit Length</small>		<small>Slit Opening</small>	
■ D38		■ 400		■ 0.5	
■ D50		■ 600		■ 1.0	
■ D65		■ 800			
		■ 1000			
		■ 1200			